

Advantage

- Bolts are evenly distributed and sealed well.
- More teeth and higher precision.
- Small internal leakage, high wear resistance.

Suitable application

Silicone, Glue, Elastomer, Polyurethane, various resins, various hardeners, pigments, Epoxy resin, Polyester.

Alloy steel



Alloy steel AlCrN



SUS DLC



| Model | 1.5 | 3 | 5 | 8 | 10 |
|----------------------------|-----------|-----------|-----------|-----------|-----------|
| cc/rev. | 1.5 | 3 | 5 | 8 | 10 |
| Fluid inlet port pt (F) | 3/8" | 3/8" | 3/8" | 3/8" | 3/8" |
| Fluid outlet port pt (F) | 3/8" | 3/8" | 3/8" | 3/8" | 3/8" |
| Temperature °C | 5-70 | 5-70 | 5-70 | 5-70 | 5-70 |
| Max. rotation rpm | 250 | 250 | 250 | 250 | 250 |
| Shaft Dia. mm | 12.7 | 12.7 | 12.7 | 12.7 | 12.7 |
| Shaft Height mm | 22.5 | 22.5 | 22.5 | 23.5 | 23.5 |
| Alloy steel Size L*W*H mm | 65x59x138 | 65x59x146 | 65x57x162 | 65x59x162 | 77x59x163 |
| Alloy steel weight Kg | 1.15 | 1.30 | 1.65 | 2.15 | 2.30 |
| SUS size L*W*H mm | 65x57x138 | 65x57x146 | 65x57x157 | | |
| SUS weight Kg | 1.10 | 1.80 | 2.00 | | |
| Alloy steel part no. | GP1.5 | GP3 | GP5 | GP8 | GP10 |
| Alloy steel AlCrN part no. | GP1.5N | GP3N | GP5N | GP8N | GP10N |
| SUS DLC part no. | GPS1.5DLC | GPS3DLC | GPS5DLC | GPS8DLC | |

Gear pump heat treatment hardness requirements:
alloy steel HRC61, vacuum coating up to HV2400, DLC HV3200

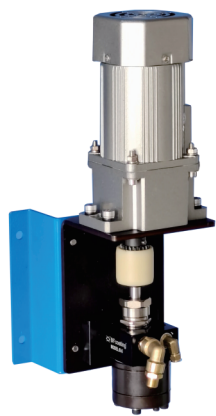
Tungsten Steel



| Model | 3 | 5 |
|--------------------------|-----------|-----------|
| cc/rev. | 3 | 5 |
| Fluid inlet port pt (F) | 3/8" | 3/8" |
| Fluid outlet port pt (F) | 3/8" | 3/8" |
| Temperature °C | 5-70 | 5-70 |
| Max. rotation rpm | 250 | 250 |
| Shaft Dia. mm | 12 | 12 |
| Shaft Height mm | 131 | 139 |
| Size L*W*H mm | Ø64x152mm | Ø64x152mm |
| Weight Kg | 1.27 | 1.5 |
| Tungsten steel Part no. | GP3T | GP5T |

Use ultra-fine toughness tungsten steel, hardness HRC91.

General industry gear metering pump combination



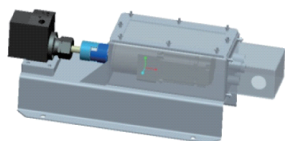
| | | | |
|--|-----------------------------------|------------------|-------------------|
| Model | 10-GP3 | 10-GP3N | 10-GPS3DLC |
| Flow rate cc/rev. | 3 | 3 | 3 |
| Gear pump material | Alloy steel | Alloy steel | SUS |
| Hardened | | Hardening coated | DLC |
| Rated rpm | 10~150 | 10~150 | 10~150 |
| Flow rate range cc/min. | 30~450 | 30~450 | 30~450 |
| Motor driven control | AC Inverter | | |
| Flow rate display | Electronic digital display CC/min | | |
| Driven electric power | AC220V x 1Φ,50/60Hz, 120W | | |
| Weight(W/paint hose and joint(kg)) | 13 | 15 | 13.5 |
| Applicable paint | Solvent base | | Solvent/waterbase |
| The gear pump combination unit for water-based insulation electrostatic is a special product. I=isolation is added after the model number. | | | |

General industry gear metering pump combination



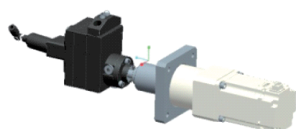
| | | | |
|--|------------------------------|------------------|-------------------|
| Model | 20-GP3-2 | 20-GP3N-2 | 20-GPS3DLC-2 |
| Flow rate cc/rev. | 3 | 3 | 3 |
| One motor drive multi gear pump | 1 drive 2 | 1 drive 2 | 1 drive 2 |
| Gear pump material | Alloy steel | Alloy steel | SUS |
| Hardened | | Hardening coated | DLC |
| Rated rpm | 10~100 | 10~100 | 10~100 |
| Flow rate range cc/min. | 30~300 | 30~300 | 30~300 |
| Motor driven control | Explosion proof AC Inverter | | |
| Flow rate display | Electronic frequency display | | |
| Driven electric power | AC220V x 1Φ,50Hz, 0.75KW | | |
| Weight(W/paint hose and joint(kg)) | 90 | 90 | 90 |
| Applicable paint | Solvent base | | Solvent/waterbase |
| The gear pump combination unit for water-based insulation electrostatic is a special product. I=isolation is added after the model number. | | | |

Gear metering pump install on robot 2nd arm for general industry



| | | | |
|---|-----------------------------|------------------|-------------------|
| Model | 30-GP3 | 30-GP3N | 30-GPS3DLC |
| Flow rate cc/rev. | 3 | 3 | 3 |
| Gear pump material | Alloy steel | Alloy steel | SUS |
| Hardened | | Hardening coated | DLC |
| Rated rpm | 10~150 | 10~150 | 10~150 |
| Flow rate range cc/min. | 30~450 | 30~450 | 30~450 |
| Motor driven control | Explosion proof AC servo | | |
| Flow rate display | HMI | | |
| Driven electric power | AC220V x 1Φ,50/60Hz, 0.37KW | | |
| Weight(W/paint hose and joint(kg)) | 7.5 | 8 | 8 |
| Applicable paint | Solvent base | | Solvent/waterbase |
| Flow rate can be controlled by robot analogue output. | | | |

Gear metering pump install on robot 2nd arm for car body and bumper



| | | | | |
|---|------------------------------|------------|----------------|---------|
| Model | 40-GPS3DLC | 40-GPS5DLC | 40-GP3T | 40-GP5T |
| Flow rate cc/rev. | 3 | 5 | 3 | 5 |
| Gear pump material | SUS | | Tungsten steel | |
| Hardened | DLC | DLC | | |
| Rated rpm | 10~150 | 10~150 | 10~150 | 10~150 |
| Flow rate range cc/min. | 30~450 | 30~450 | 30~450 | 30~450 |
| Motor driven control | AC explosion proof motor | | | |
| Flow rate display | HMI | | | |
| Driven electric power | AC220V x 3Φ,50/60Hz, 0.416kW | | | |
| Weight(W/paint hose and joint(kg)) | 8 | 10 | 8 | 10 |
| Applicable paint | Solvent/water base | | | |
| Flow rate can be controlled by robot analogue output or digital output. | | | | |